
MATHEMATICS

9709/11

Paper 1 Pure Mathematics 1 (P1)

October/November 2016

1 hour 45 minutes

Additional Materials: List of Formulae (MF9)

READ THESE INSTRUCTIONS FIRST

An answer booklet is provided inside this question paper. You should follow the instructions on the front cover of the answer booklet. If you need additional answer paper ask the invigilator for a continuation booklet.

Answer **all** the questions.

Give non-exact numerical answers correct to 3 significant figures, or 1 decimal place in the case of angles in degrees, unless a different level of accuracy is specified in the question.

The use of an electronic calculator is expected, where appropriate.

You are reminded of the need for clear presentation in your answers.

At the end of the examination, fasten all your work securely together.

The number of marks is given in brackets [] at the end of each question or part question.

The total number of marks for this paper is 75.

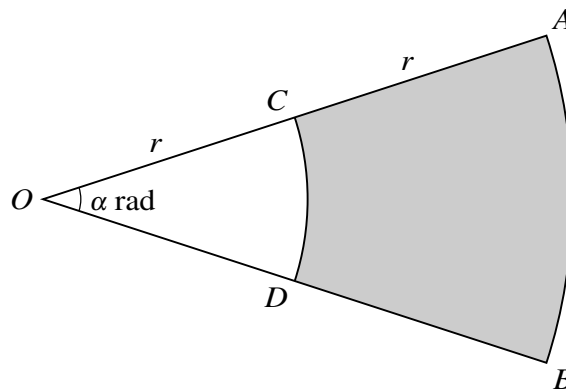
This document consists of **4** printed pages and **1** insert.



- 1 (i) Express $x^2 + 6x + 2$ in the form $(x + a)^2 + b$, where a and b are constants. [2]
- (ii) Hence, or otherwise, find the set of values of x for which $x^2 + 6x + 2 > 9$. [2]

- 2 Find the term independent of x in the expansion of $\left(2x + \frac{1}{2x^3}\right)^8$. [4]

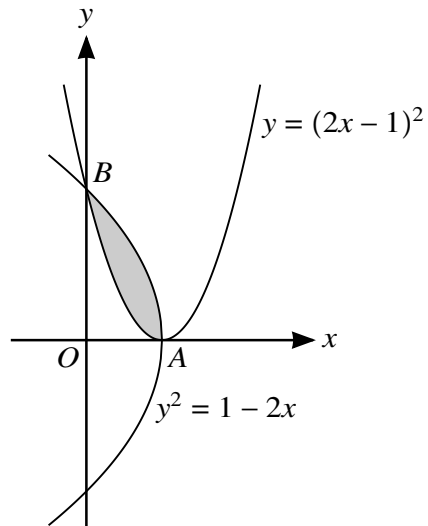
3



In the diagram OCA and ODB are radii of a circle with centre O and radius $2r$ cm. Angle $AOB = \alpha$ radians. CD and AB are arcs of circles with centre O and radii r cm and $2r$ cm respectively. The perimeter of the shaded region $ABDC$ is $4.4r$ cm.

- (i) Find the value of α . [2]
- (ii) It is given that the area of the shaded region is 30 cm^2 . Find the value of r . [3]
- 4 C is the mid-point of the line joining $A(14, -7)$ to $B(-6, 3)$. The line through C perpendicular to AB crosses the y -axis at D .
- (i) Find the equation of the line CD , giving your answer in the form $y = mx + c$. [4]
- (ii) Find the distance AD . [2]
- 5 The sum of the 1st and 2nd terms of a geometric progression is 50 and the sum of the 2nd and 3rd terms is 30. Find the sum to infinity. [6]
- 6 (i) Show that $\cos^4 x \equiv 1 - 2\sin^2 x + \sin^4 x$. [1]
- (ii) Hence, or otherwise, solve the equation $8\sin^4 x + \cos^4 x = 2\cos^2 x$ for $0^\circ \leq x \leq 360^\circ$. [5]

7



The diagram shows parts of the curves $y = (2x - 1)^2$ and $y^2 = 1 - 2x$, intersecting at points A and B .

- (i) State the coordinates of A . [1]
- (ii) Find, showing all necessary working, the area of the shaded region. [6]

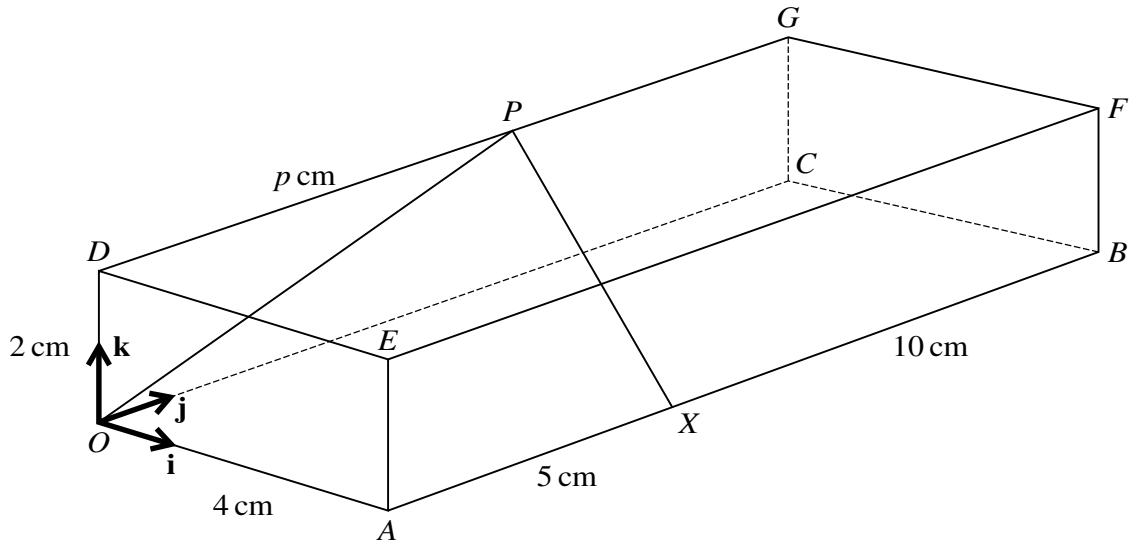
8 The functions f and g are defined by

$$f(x) = \frac{4}{x} - 2 \quad \text{for } x > 0,$$

$$g(x) = \frac{4}{5x + 2} \quad \text{for } x \geq 0.$$

- (i) Find and simplify an expression for $fg(x)$ and state the range of fg . [3]
- (ii) Find an expression for $g^{-1}(x)$ and find the domain of g^{-1} . [5]

[Questions 9, 10 and 11 are printed on the next page.]



The diagram shows a cuboid $OABCDEFG$ with a horizontal base $OABC$ in which $OA = 4$ cm and $AB = 15$ cm. The height OD of the cuboid is 2 cm. The point X on AB is such that $AX = 5$ cm and the point P on DG is such that $DP = p$ cm, where p is a constant. Unit vectors \mathbf{i} , \mathbf{j} and \mathbf{k} are parallel to OA , OC and OD respectively.

- (i) Find the possible values of p such that angle $OPX = 90^\circ$. [4]
- (ii) For the case where $p = 9$, find the unit vector in the direction of \overrightarrow{XP} . [2]
- (iii) A point Q lies on the face $CBFG$ and is such that XQ is parallel to AG . Find \overrightarrow{XQ} . [3]
- 10 A curve has equation $y = f(x)$ and it is given that $f'(x) = 3x^{\frac{1}{2}} - 2x^{-\frac{1}{2}}$. The point A is the only point on the curve at which the gradient is -1 .
- (i) Find the x -coordinate of A . [3]
- (ii) Given that the curve also passes through the point $(4, 10)$, find the y -coordinate of A , giving your answer as a fraction. [6]
- 11 The point $P(3, 5)$ lies on the curve $y = \frac{1}{x-1} - \frac{9}{x-5}$.
- (i) Find the x -coordinate of the point where the normal to the curve at P intersects the x -axis. [5]
- (ii) Find the x -coordinate of each of the stationary points on the curve and determine the nature of each stationary point, justifying your answers. [6]

Permission to reproduce items where third-party owned material protected by copyright is included has been sought and cleared where possible. Every reasonable effort has been made by the publisher (UCLES) to trace copyright holders, but if any items requiring clearance have unwittingly been included, the publisher will be pleased to make amends at the earliest possible opportunity.

To avoid the issue of disclosure of answer-related information to candidates, all copyright acknowledgements are reproduced online in the Cambridge International Examinations Copyright Acknowledgements Booklet. This is produced for each series of examinations and is freely available to download at www.cie.org.uk after the live examination series.

Cambridge International Examinations is part of the Cambridge Assessment Group. Cambridge Assessment is the brand name of University of Cambridge Local Examinations Syndicate (UCLES), which is itself a department of the University of Cambridge.